

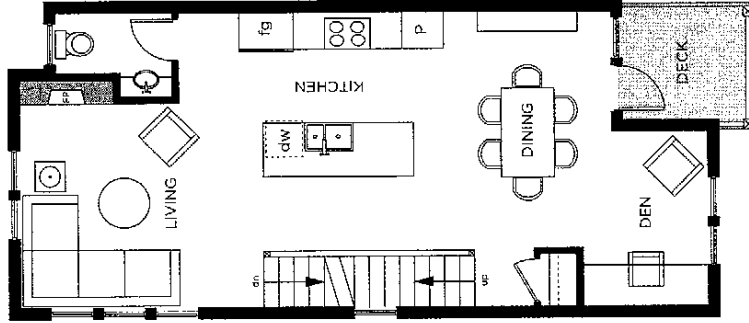
TOWNHOME SEVEN | 1,640 SQ. FT.

3 Bedroom | 3 Bathroom | Flex Room | Den

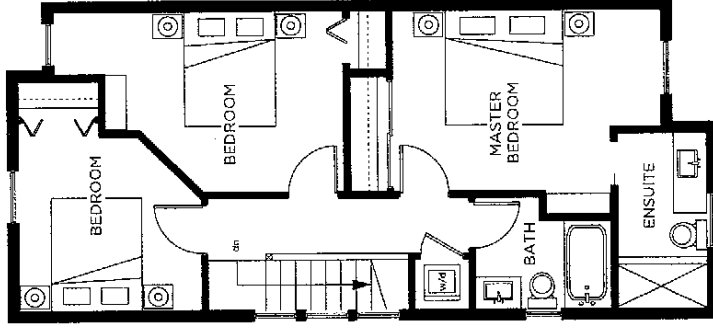


LONDON ARBOUR

OAKLANDS TOWNHOMES



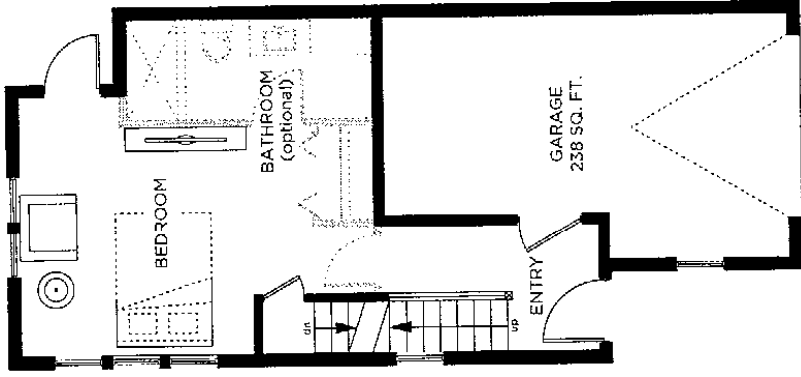
MAIN FLOOR 626 SQ. FT.



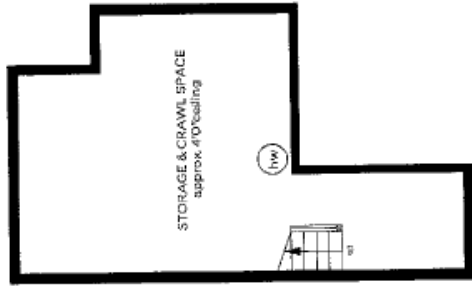
UPPER FLOOR 645 SQ. FT.



Sales Gallery: 1967 Oak Bay Avenue, Victoria BC V8R 1E3 | T: 778.265.2050 londonarbour.com
 In a continuing effort to meet the challenge of product improvements, the developer reserves the right to modify or change floor plans, building design, specifications and/or pricing without notice. © 2012



LOWER FLOOR 369 SQ. FT.



CRAWL SPACE 327 SQ. FT.