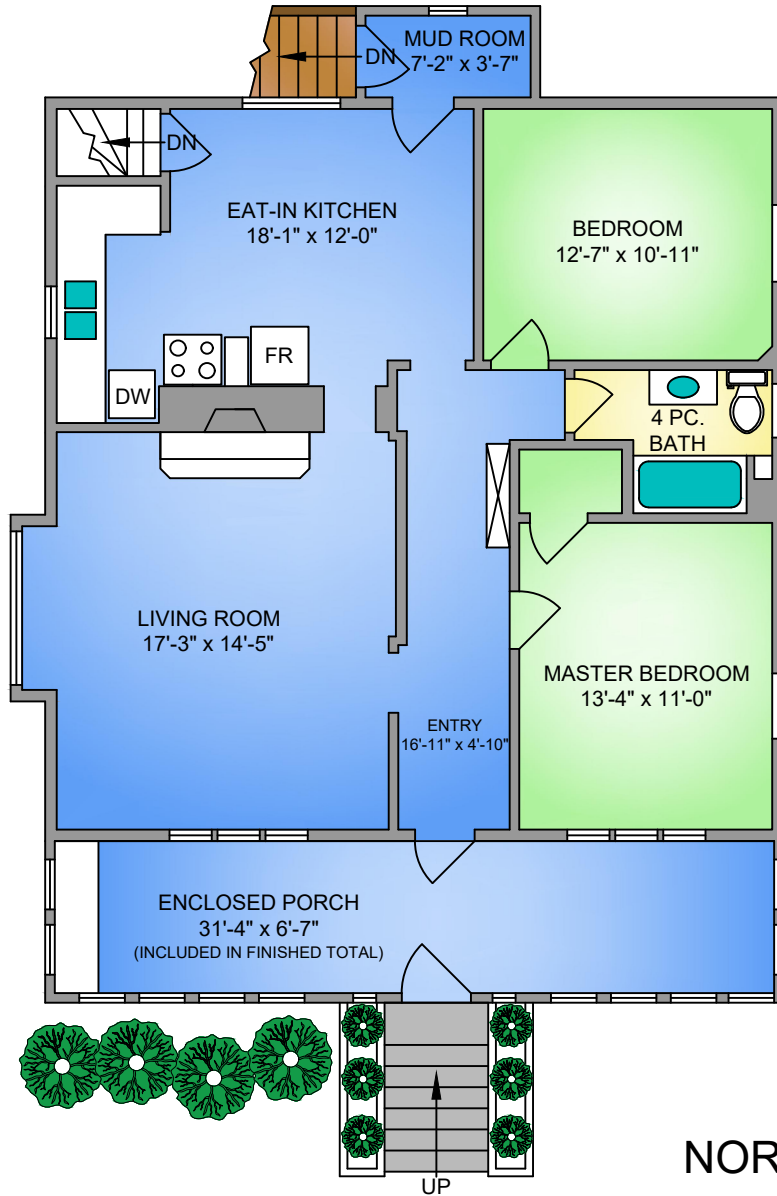


MAIN FLOOR

1272 SQ. FT.

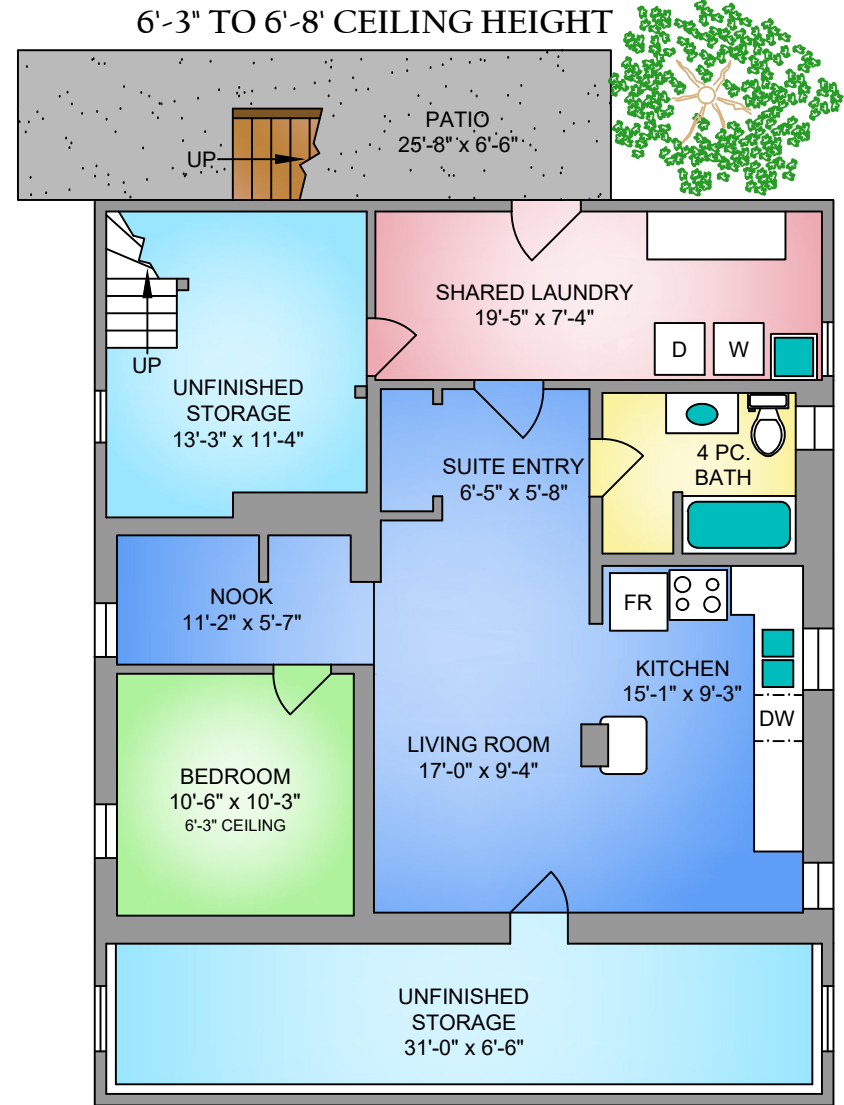
8'-8" CEILING HEIGHT



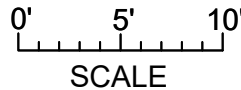
LOWER FLOOR

878 SQ. FT.

6'-3" TO 6'-8" CEILING HEIGHT



NORTH



250-884-9753
 matt@propermeasure.com
 www.propermeasure.com

3226 ORILLIA STREET MAY 2, 2018 PREPARED FOR THE EXCLUSIVE USE OF MARKO JURAS PLANS MAY NOT BE 100% ACCURATE, IF CRITICAL BUYER JURAS TO VERIFY.			
FLOOR	AREA (SQ. FT.)		
	FINISHED	UNFINISHED	DECK / PATIO
MAIN	1272	-	-
LOWER	878	381	167
TOTAL	2150	381	167