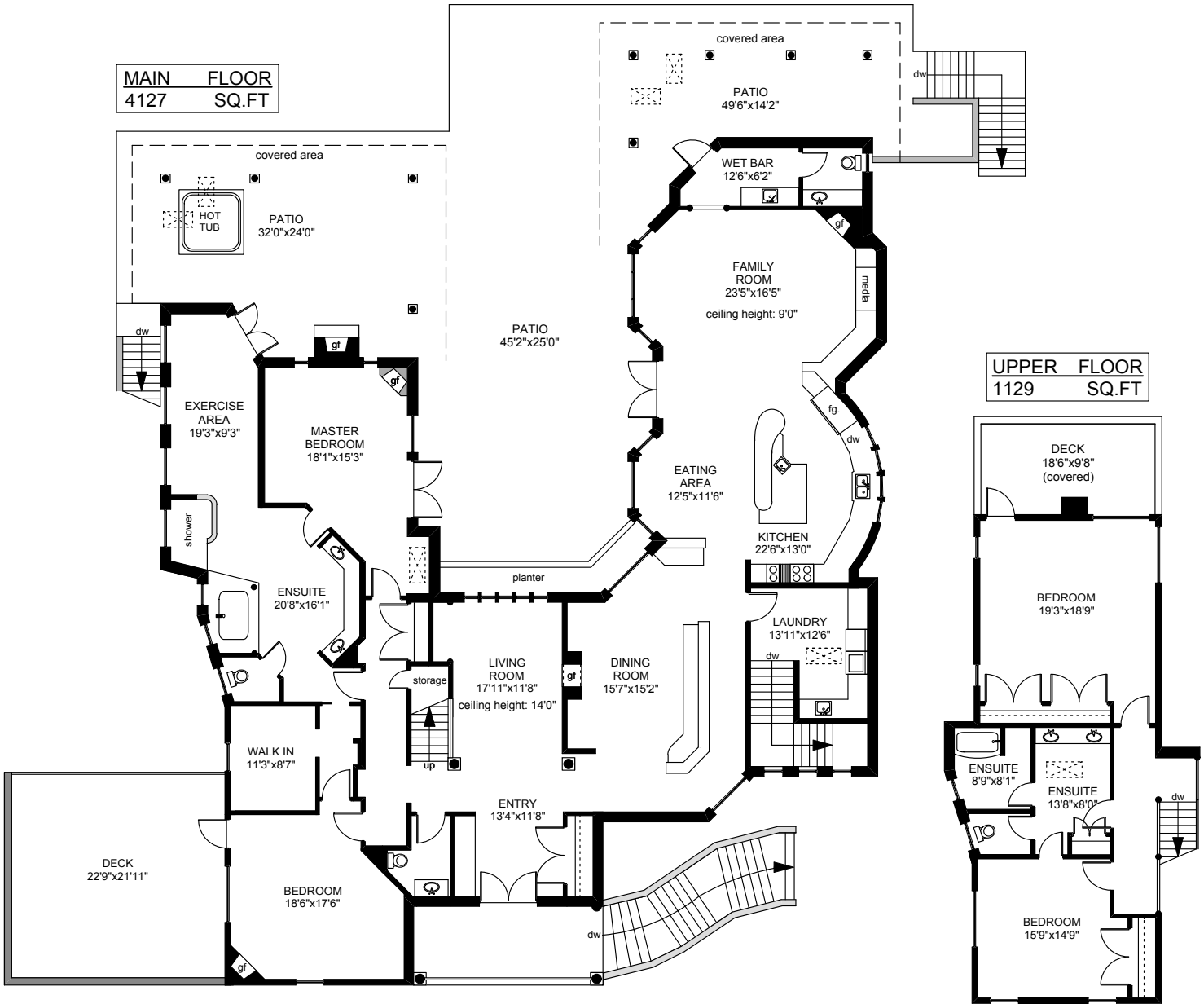
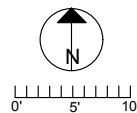


350 SPARTON ROAD



	FINISHED SQ. FT.	UNFINISHED SQ. FT.	TOTAL SQ. FT.
MAIN	4127	0	4127
UPPER	1129	0	1129
LOWER	3263	890	4153
TOTAL	8519	890	9409
GARAGE	0	1069	1069
GARAGE 2	0	750	750
PATIOS	0	3409	3409
DECKS	0	673	673



PREPARED FOR THE EXCLUSIVE USE OF
MARKO JURAS OF FAIR REALTY

MEASURED ON: 01/17/08
DRAWING FILE: 09468

Tafe Measure VICTORIA, B.C.
Ph. 883.8894
www.tafemeasure.com